

Proposal of a unified biodiversity impact assessment method

Jan P Lindner^{1*}, Tabea Beck², Sebastian Schwarz³, Ulrike Eberle⁴, Martin Blumberg⁵

Driven by the insight of society that biodiversity is worthy of protection, the decrease in habitats and species recently became a central topic in environmental policy. One consensus point is that private and public actors need instruments to identify the biodiversity performance of product systems and services.

A team under the lead of the GaBi department at Fraunhofer Institute for Building Physics (IBP) recently started developing a method for the assessment of the biodiversity impact of product systems. Regarding future application the crucial point is that this tool has to be broadly accepted by scientific and economic actors. Thus,

knowledge and experience of the LCA community must be involved in the development of the method. We would like to present the current state of our work and receive constructive criticism from our peers.

Quick check

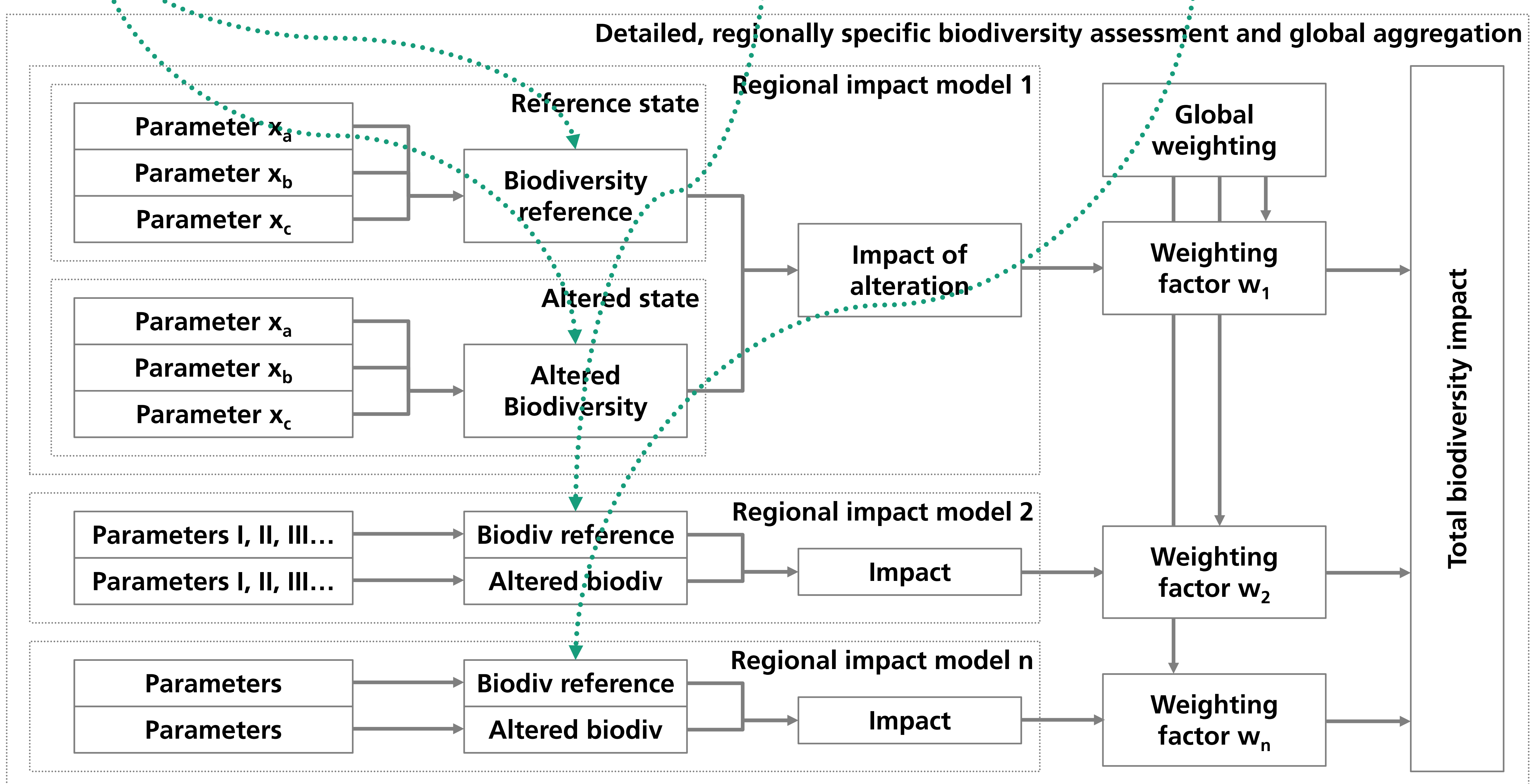
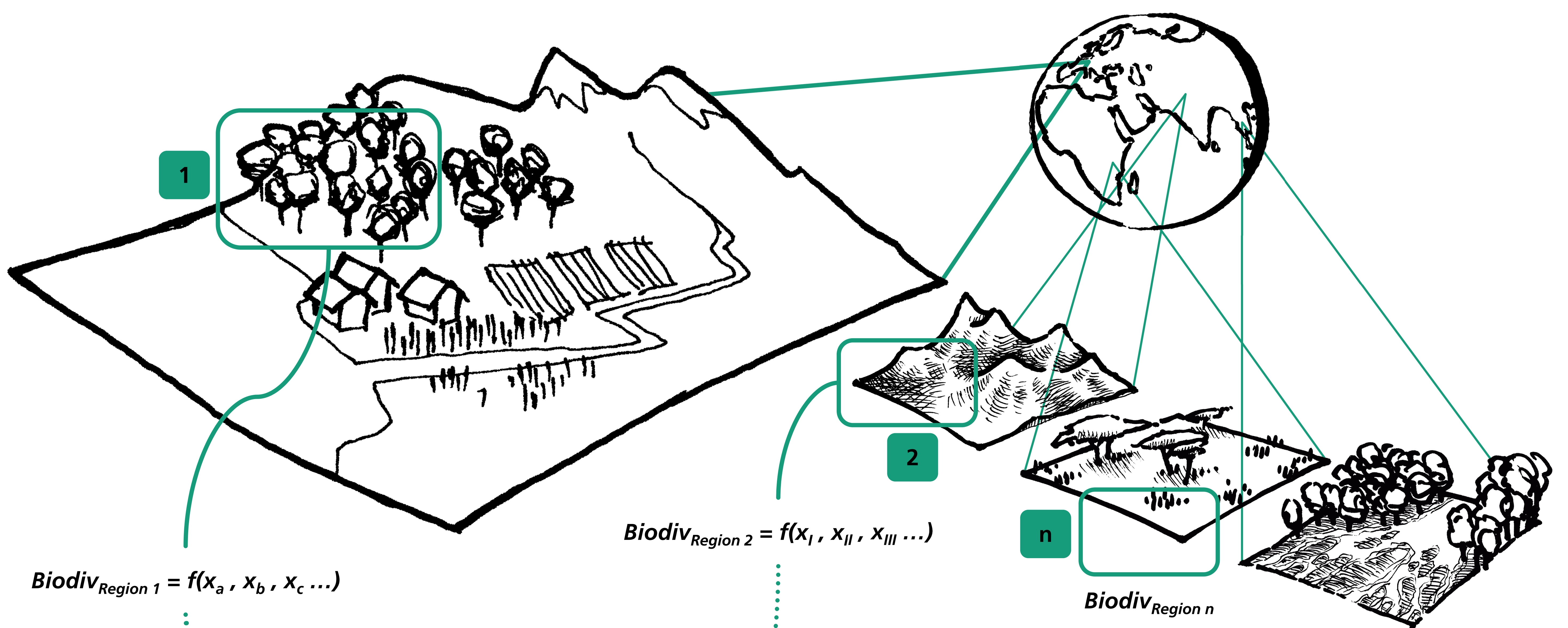
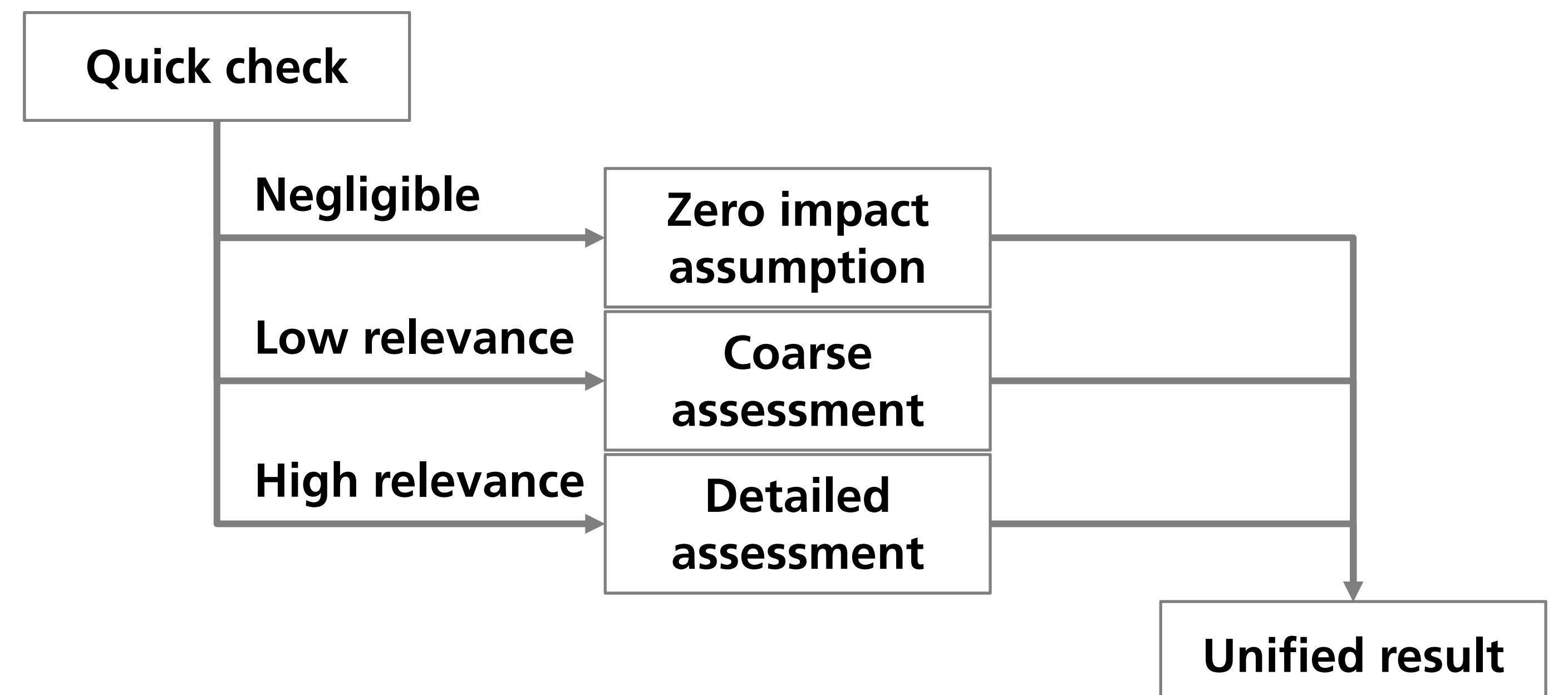
Ranking of product system elements by biodiversity relevance
Assistance in cut-off rules definition

Coarse assessment

Existing or slightly modified method to be defined
(Suitable e.g. Biodiversity Damage Potential by Koellner/De Baan)

Detailed assessment

Description of biodiversity state by regionally specific potential function
Difference between reference and altered state understood as impact
Agregation across regions using globally defined weighting factors



¹ Fraunhofer IBP, dept. GaBi

² University of Stuttgart, LBP, dept. GaBi

³ Five Winds International

⁴ corsus – corporate sustainability

⁵ brands & values

*corresponding author. e-mail: jan-paul.lindner@ibp.fraunhofer.de